



Securifog MG3

# Mobile Security Fog System

The Final Layer of Protection – for cargo on the move.

[WWW.SECURIFOG.US](http://WWW.SECURIFOG.US)



# The Growing Cargo Theft Crisis

Organized theft groups are escalating operations – and the numbers prove it. The losses are real, the threat is growing, and your cargo is in the crosshairs.

**18%**

Rise in Incidents

Confirmed cargo theft incidents increased in 2025

**\$725M**

Total Reported Losses

Across all incidents nationwide

**\$274K**

Average Loss Per Incident

# When All Other Layers Fail...

Perimeter security, locks, GPS/geofence tracking, and driver alarms will be bypassed by organized theft groups, if they have enough time. They are coordinated and specifically targeting higher-value loads. When they reach the cargo, the loss is often total – and irreversible.



The immediate threat deterrent and final layer in cargo theft protection is Securifog.



# Introducing Securifog MG3

The first mobile application of proven security fog technology – bringing facility-grade protection to in-transit cargo for the very first time.



## 30 Years of Proven Protection

Security fog has successfully protected high-value assets for nearly three decades

## First Mobile Deployment

Now engineered for in-transit cargo protection on the road

## Zero Visibility = Zero Theft

Thieves cannot steal what they cannot see – the fog creates the immediate threat deterrent

# Rapid & Dense Fog Deployment

The MG3 deploys faster than any thief can react. A standard 53-ft trailer is completely filled in seconds – eliminating all visibility and making cargo extraction physically impossible.

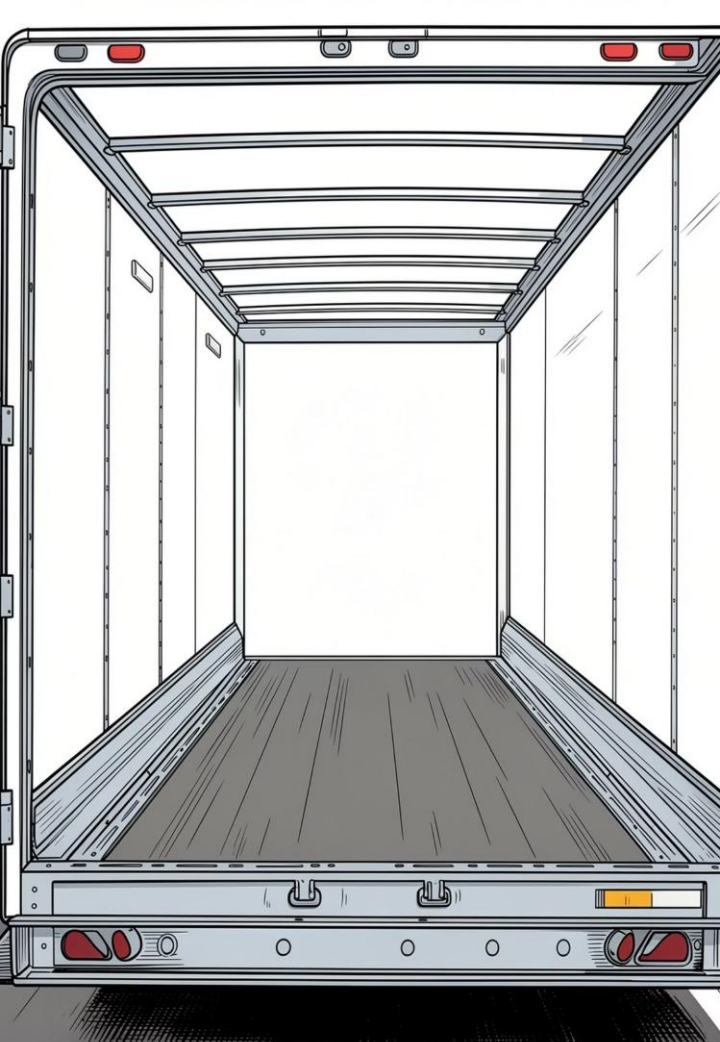
**5,000+ cu ft in 15 seconds**

Rapid-response deployment when every second counts

**13,000+ cu ft in 80 seconds**

Full-density coverage for maximum trailer volumes





# No Residue • Nothing to Clean Up

Securifog MG3 uses non-toxic, food-grade fog formula – safe for all cargo types, including perishables, pharmaceuticals, and electronics. No cleanup. No downtime.



## Non-Toxic & Food-Grade

Safe for all cargo – including food, pharma, and sensitive electronics



## Zero Residue or Odor

Fog dissipates completely – no cleanup required after deployment



## Immediately Operational

Cargo and trailer are ready for use the moment fog clears

# True Mobility – Built for the Road



The MG3 is battery operated and trickle charges off the truck's power system. Tied via relays to arm and activate from most any sentry system, the fog deploys instantly along with 115 dB sounder.

## Fully Battery Operated

No reliance on vehicle power to stay armed

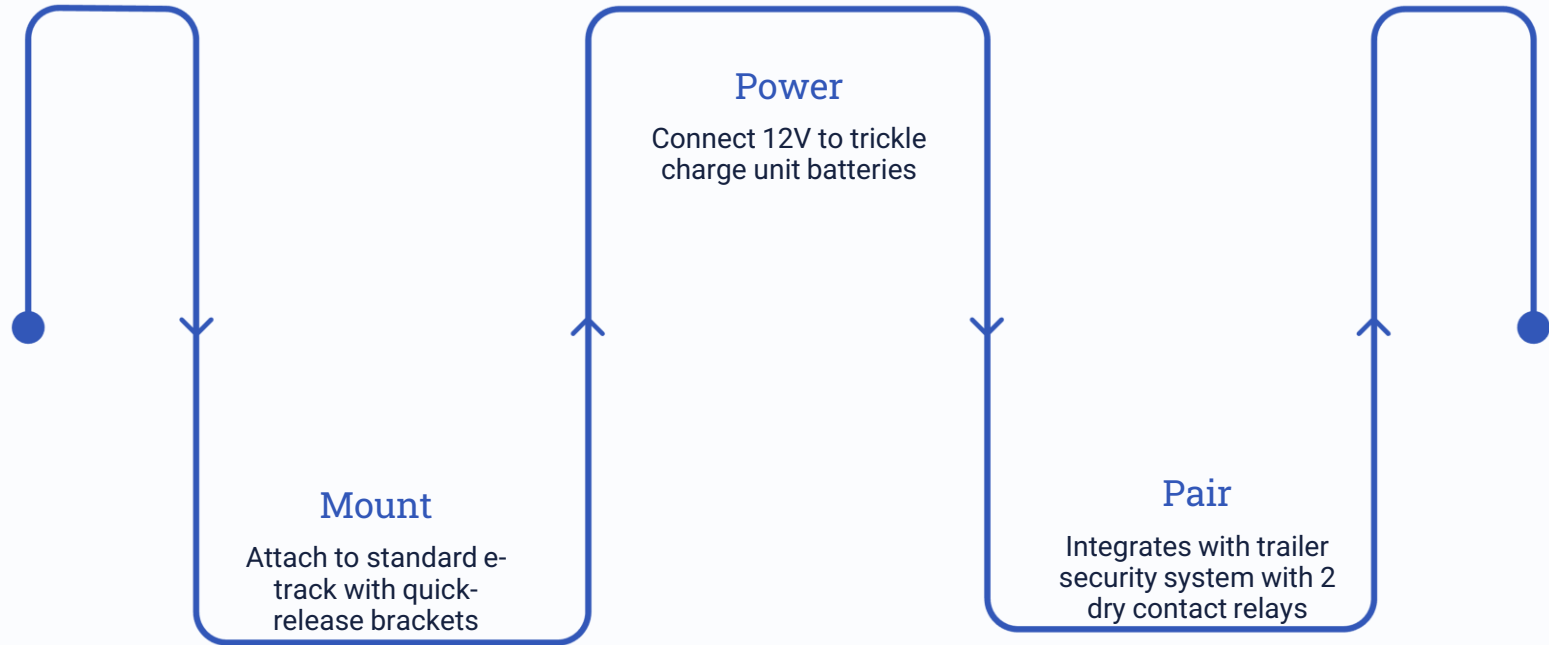
## Instant Fog Deployment

SOP's developed with end user requirements for activation

## Months of Standby

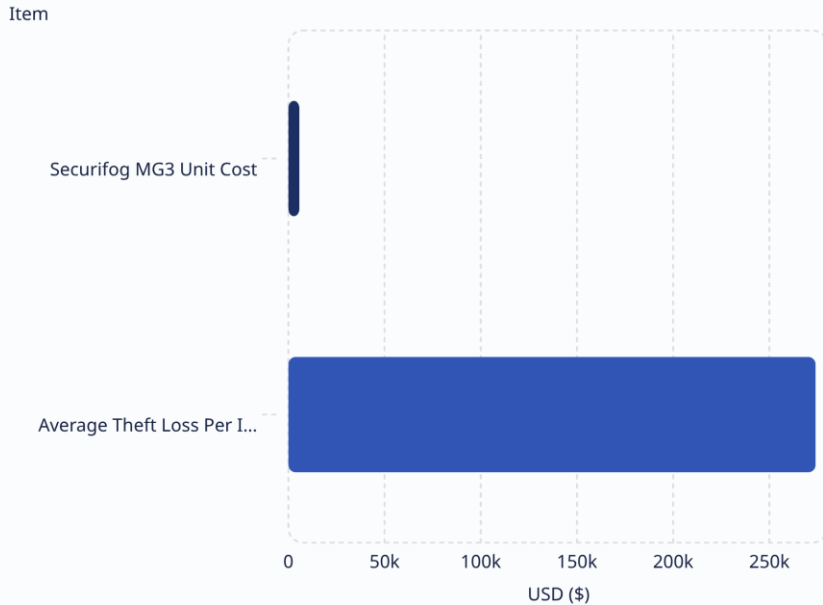
Long-term independent operation between charges

# Simple Installation. Seamless Integration.



Most installations take under an hour with minimal tools and minimal trailer downtime. The MG3 mounts on e-track and works with most existing trailer sentry or security systems, requiring only a standard 12V connection and two relays. A built-in 115 dB audible sounder provides an additional on-site deterrent.

# Strong Return on Investment



## The Math Is Simple

At just **\$5,690 per unit**, the MG3 is a fraction of the cost of a single theft event. One prevented incident more than pays for the entire system – and protects every load that follows.



One prevented theft = **48x return** on your investment.

Unit Cost: \$5,690

One-time investment

Average Loss: \$274,000

Per theft incident

# Let's Protect Your Cargo

Your highest-risk loads deserve the final layer of protection. Securifog MG3 is ready to deploy – and we're ready to show you exactly how it works.

## Live Demo

Schedule a live demonstration and see the MG3 in action

## Pilot Program

Start with your highest-risk routes and prove the ROI firsthand

## Contact Us

Speak with a security specialist about protecting your fleet today

[WWW.SECURIFOG.US](http://WWW.SECURIFOG.US) 314-798-8747



**SECURIFOG**  
Transported Asset Protection